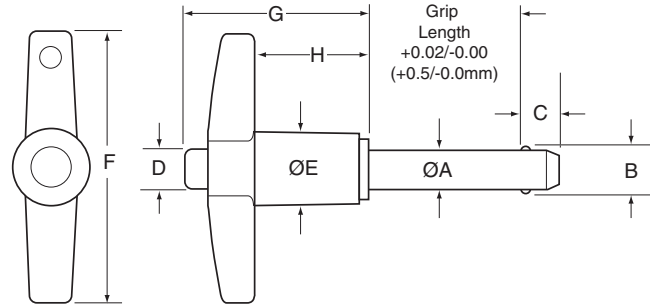




# T-Handle Kwik-Lok® Pin MS17985, NAS1333-NAS1343 A2=Aluminum T Handle



- The T-Handle Kwik-Lok® Pin provides a firm, even grip for smooth comfortable operation.
- Handle is Anodized black cast aluminum and the button is 2024 blue anodized aluminum.
- Pin body: Heat Treated 17-4 PH Stainless Steel.
- Includes hole and split ring for easy attachment of optional lanyard.



## T-Handle Specifications – Inch

DIA	A MIN	A MAX	B +/- .005	C +0.00 / -0.04	D MIN	D MAX	E MIN	E MAX	F MIN	F MAX	G MAX	H MIN
3/16	0.1875	0.1885	0.220	0.260	0.250	0.310	0.380	0.500	1.750	1.815	1.270	0.800
1/4	0.2470	0.2485	0.289	0.290	0.250	0.310	0.380	0.500	1.750	1.815	1.270	0.800
5/16	0.3095	0.3110	0.375	0.330	0.250	0.310	0.380	0.500	1.750	1.815	1.270	0.800
3/8	0.3720	0.3735	0.440	0.365	0.300	0.390	0.510	0.625	1.935	2.065	1.450	0.850
7/16	0.4345	0.4360	0.509	0.380	0.300	0.390	0.510	0.625	1.935	2.065	1.470	0.850
1/2	0.4970	0.4985	0.594	0.460	0.435	0.565	0.630	0.800	2.220	2.345	1.600	0.885
9/16	0.5595	0.5610	0.666	0.510	0.435	0.565	0.630	0.800	2.220	2.345	1.600	0.885
5/8	0.6220	0.6235	0.750	0.580	0.450	0.580	0.810	0.940	2.250	3.100	1.700	0.980
3/4	0.7470	0.7485	0.887	0.670	0.570	0.700	0.810	1.000	2.500	3.100	1.720	1.030
7/8	0.8720	0.8735	1.046	0.760	0.700	0.840	1.120	1.300	2.750	3.520	2.170	1.310
1	0.9970	0.9985	1.209	0.890	0.750	0.950	1.180	1.320	2.750	3.520	2.170	1.310

## T-Handle Specifications – Metric

DIA	A MIN	A MAX	B +/- .13	C +0.00 / -1.00	D MIN	D MAX	E MIN	E MAX	F MIN	F MAX	G MAX	H MIN
5MM	4.92	4.96	5.54	6.0	6.4	7.9	9.7	12.7	44.5	46.1	32.3	20.3
6MM	5.92	5.96	6.99	7.0	6.4	7.9	9.7	12.7	44.5	46.1	32.3	20.3
8MM	7.92	7.96	9.42	8.0	6.4	7.9	9.7	12.7	44.5	46.1	32.3	20.3
10MM	9.92	9.96	11.86	9.0	7.6	9.9	13.0	15.9	49.1	52.5	36.8	21.6
12MM	11.92	11.96	14.45	10.0	7.6	9.9	13.0	15.9	49.1	52.5	36.8	21.6
16MM	15.92	15.96	19.00	14.0	11.4	14.7	20.6	23.9	57.2	78.7	43.2	24.9
20MM	19.92	19.96	24.08	17.0	14.5	17.8	20.6	25.4	63.5	78.7	43.7	26.2
25MM	24.92	24.96	30.94	22.0	19.1	24.1	30.0	33.5	69.9	89.4	55.1	33.3

Dimensions in millimeters

May be ordered with 4 locking balls for additional locking element tensile strength.  
Special Materials, grip length and longer “C” dimensions upon request.



### T-Handle – Inch

Aluminum Handle, Body – High Strength Stainless Steel, 17-4 PH Heat Treated

Pin Dia	Grip Length (In)												
	0.5	0.75	1	1.25	1.5	1.75	2	2.5	3	4	5	6	
PART NUMBERS	3/16	801000	801001	801002	801003	801004	801005	801006	801008	801009	801011	801013	801015
	1/4	801016	801017	801018	801019	801020	801021	801022	801024	801025	801027	801029	801031
	5/16	801032	801033	801034	801035	801036	801037	801038	801040	801041	801043	801045	801047
	3/8	801048	801049	801050	801051	801052	801053	801054	801056	801057	801059	801061	801063
	7/16	801064	801065	801066	801067	801068	801069	801070	801072	801073	801075	801077	801079
	1/2	801080	801081	801082	801083	801084	801085	801086	801088	801089	801091	801093	801095
	9/16	801096	801097	801098	801099	801100	801101	801102	801104	801105	801107	801109	801111
	5/8	801112	801113	801114	801115	801116	801117	801118	801120	801121	801123	801125	801127
	3/4	801128	801129	801130	801131	801132	801133	801134	801136	801137	801139	801141	801143
	7/8	801144	801145	801146	801147	801148	801149	801150	801152	801153	801155	801157	801159
	1	801160	801161	801162	801163	801164	801165	801166	801168	801169	801171	801173	801175

### T-Handle – Metric

Aluminum Handle, Body – High Strength Stainless Steel, 17-4 PH Heat Treated

Pin Dia	Grip Length (Metric)												
	10	15	20	25	30	40	50	60	70	80	90	100	
PART NUMBERS	5	851000	851001	851002	851003	851004	851005	851006	851007	851008	851009	851010	851011
	6	851012	851013	851014	851015	851016	851017	851018	851019	851020	851021	851022	851023
	8	851024	851025	851026	851027	851028	851029	851030	851031	851032	851033	851034	851035
	10	851036	851037	851038	851039	851040	851041	851042	851043	851044	851045	851046	851047
	12	851048	851049	851050	851051	851052	851053	851054	851055	851056	851057	851058	851059
	16	851060	851061	851062	851063	851064	851065	851066	851067	851068	851069	851070	851071
	20	851072	851073	851074	851075	851076	851077	851078	851079	851080	851081	851082	851083
	25	851084	851085	851086	851087	851088	851089	851090	851091	851092	851093	851094	851095

Contact customer service for other sizes.



May be ordered with 4 locking balls for additional locking element tensile strength.